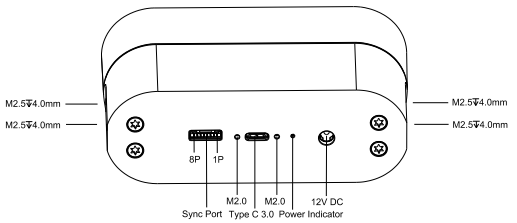
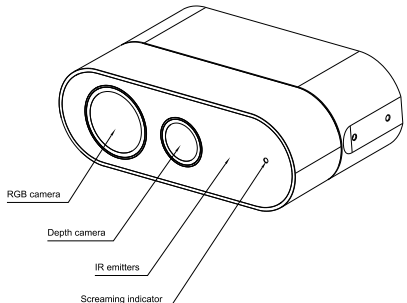
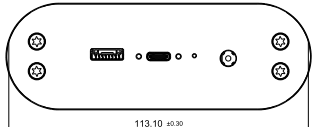
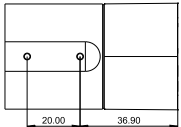
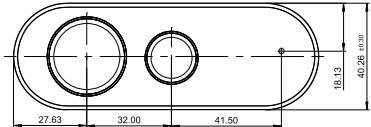
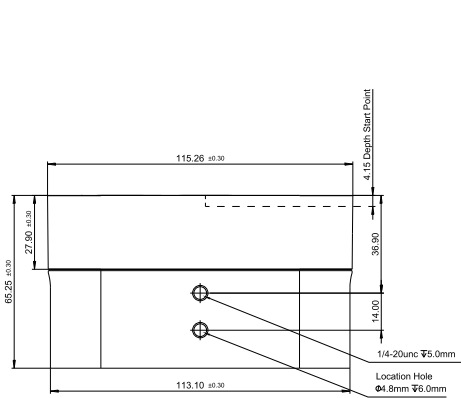



NOTES
V1.0 : First Release



Sync Port			
Connector	Female Connector (PCBA)		MaleConnector (cable)
	11257W90-NP-S-08		Metal PIN A1257-069
PIN Definition			
1P	VCC		
2P	GPIO_OUT		
3P	VSYNC_OUT		
4P	TIME_SYNC_OUT		
5P	REST_IN		
6P	VSYNC_IN		
7P	TIME_SYNC_IN		
8P	GND		
DC Port			
Female		Male	
-	+	-	+
Ø5.0mm	Ø2.0mm	Ø5.5mm	Ø2.1mm

Drawing Name		Femto Bolt		Document No.			Drawing Revision		
							V1.0		
ORBEC		Sheet 1 of 2		Scale	1:1	Creation	Hu CX	2024-1-22	
				Size	A1	Modified			
				Weight	348g	approved	Shi Jie	2024-1-22	
Material				Part No.	/				