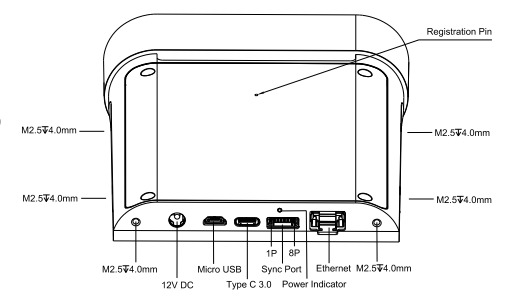
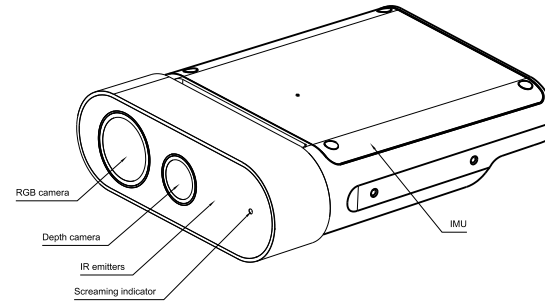
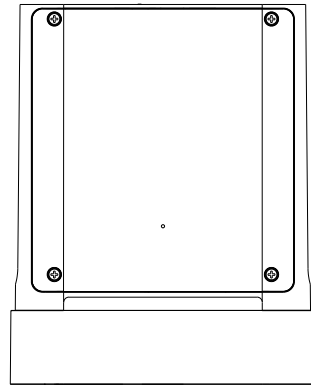
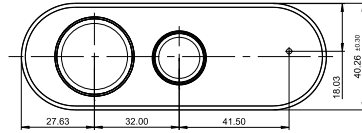
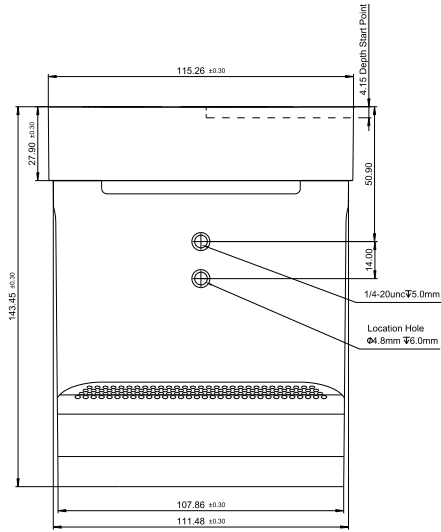


NOTES
V1.0 : First Release



Sync Port			
Connector	Female Connector (PCBA)	Male Connector (Metal)	Male Connector (Plastic)
1P	1157995-001-0-08	1157995-001-0-08	1157995-001-0-08
Pin Definition			
1P	VCC		
2P	GPIO_OUT		
3P	VSYNC_OUT		
4P	TIME_SYNC_OUT		
5P	RESET_IN		
6P	VSYNC_IN		
7P	TIME_SYNC_IN		
8P	GND		

DC Port			
Connector	Female	Male	
1P	+	-	
2P	-	+	

Drawing Name				Document No.		Drawing Revision	Part Revision
Femto Mege without Covering						V1.0	
ORBBEC		Sheet 1 of 2	Scale	1:1	Creation	Hu CX	2024-1-22
			Size	A1	Modified		
			Weight	348g	approved	Shi Jie	2024-1-22
Material				Part No.	/		