

F

E

D

C

B

A

6

5

4

3

2

1

F

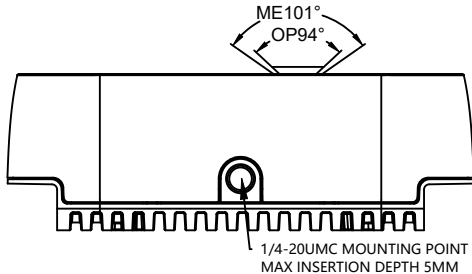
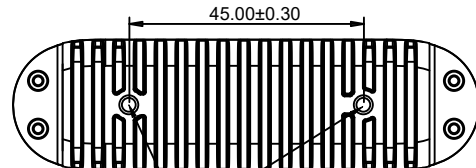
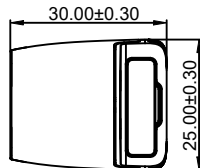
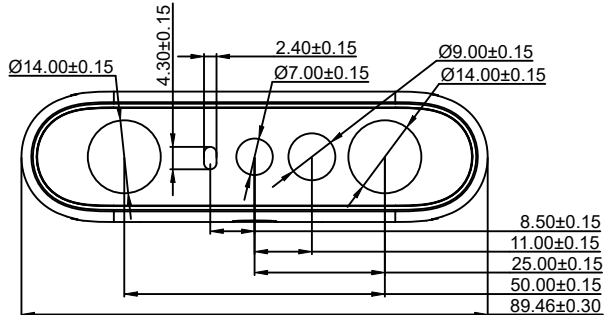
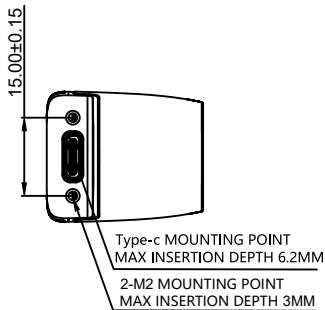
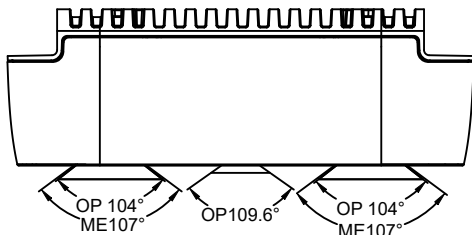
E

D

C

B

A



Note: The recommended torque for the 1/4-20UNC thread is 4.0 N.m
The recommended torque for the M2 thread is 0.16 N.m
The recommended torque for the M3 thread is 0.4 N.m

UNIT:MM

图纸名称 Drawing Name		图纸编号 Document No.			图纸版本 Drawing Revision	零件版本 Part Revision
Gemini 2 Gemini 335					V2.0	V2.0
奥比中光 ORBEC	Sheet 1 of 1	比例 Scale	1:1	创建 Created	CHALI	20241107
		图幅 Size		修订 Modified		
		重量 Weight		批准 Approved		
材料 Material	料号 Part No.				数量 QTY	

6

5

4

3

2

1